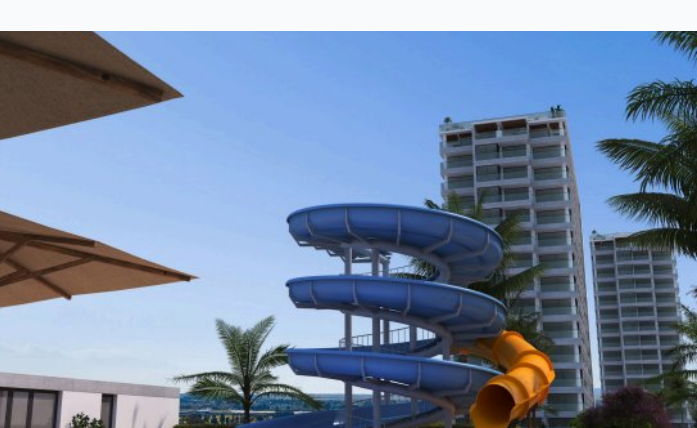


Aphrodite Aqua residential complex

Location **Lefke, Gaziveren**



About the project



| | |
|----------------|--------------------------------|
| Developer | Evergreen Developments |
| Start of sale | 01.03.2023 |
| Key handover | 2027 |
| Houses/blocks | 2 |
| Building floor | 14 14 Min Max |
| Units total | 104 - Studio, 224 - 1+1 |

Distance to the sea - 500 m

Distance to key locations:

Airport 60 min, Supermarket 2 min, Pharmacy 8 min, School 2 min, Kindergarten 4 min, Hospital 9 min.

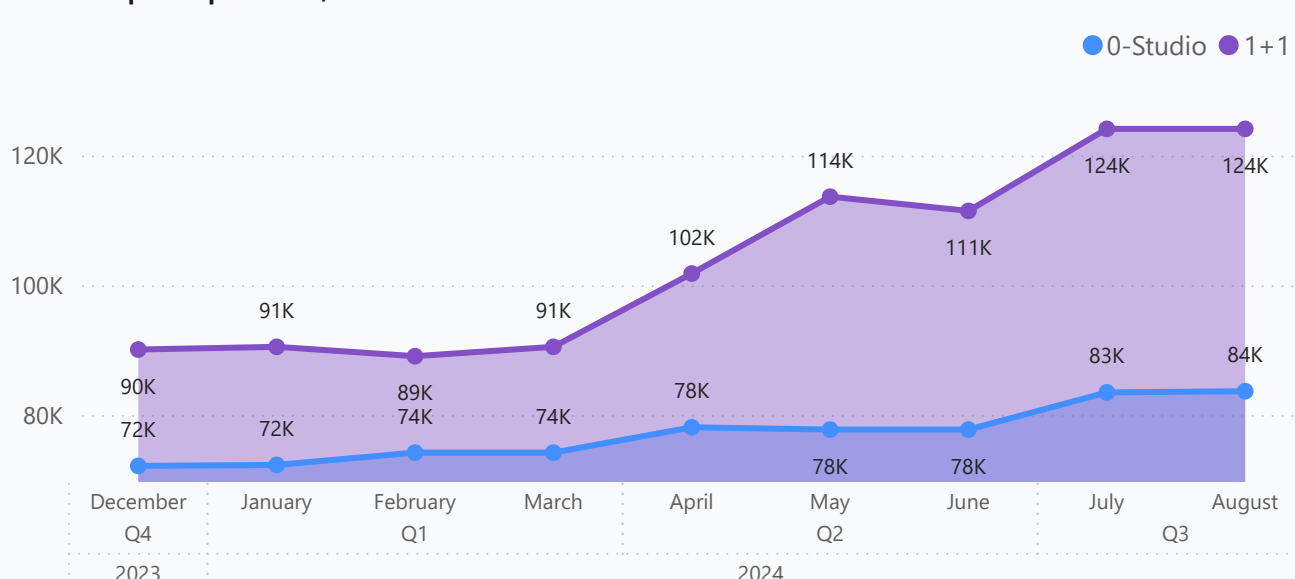
Aphrodite Aqua is a luxury residential complex located on the sandy beaches of the western coast of Cyprus. This complex offers the perfect combination of seaside luxury, spectacular sea views and unique amenities. The project offers studio apartments and one-bedroom apartments, all with direct sea views and only 300 meters from the beach.

Complex infrastructure

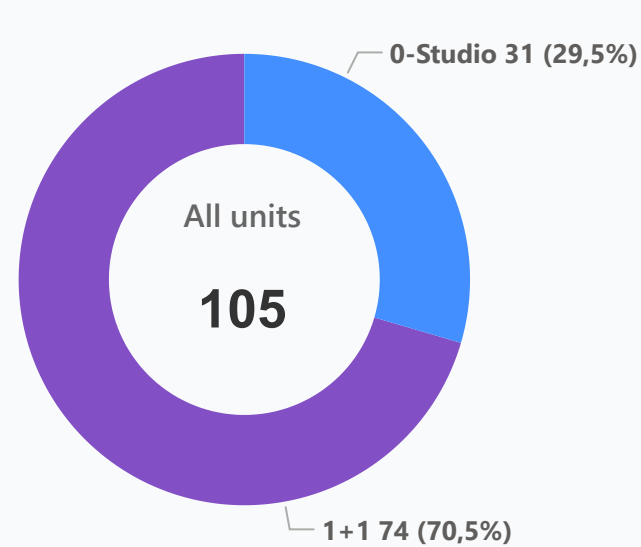
- Bar
- Open pool

Available units 105 / 328 total

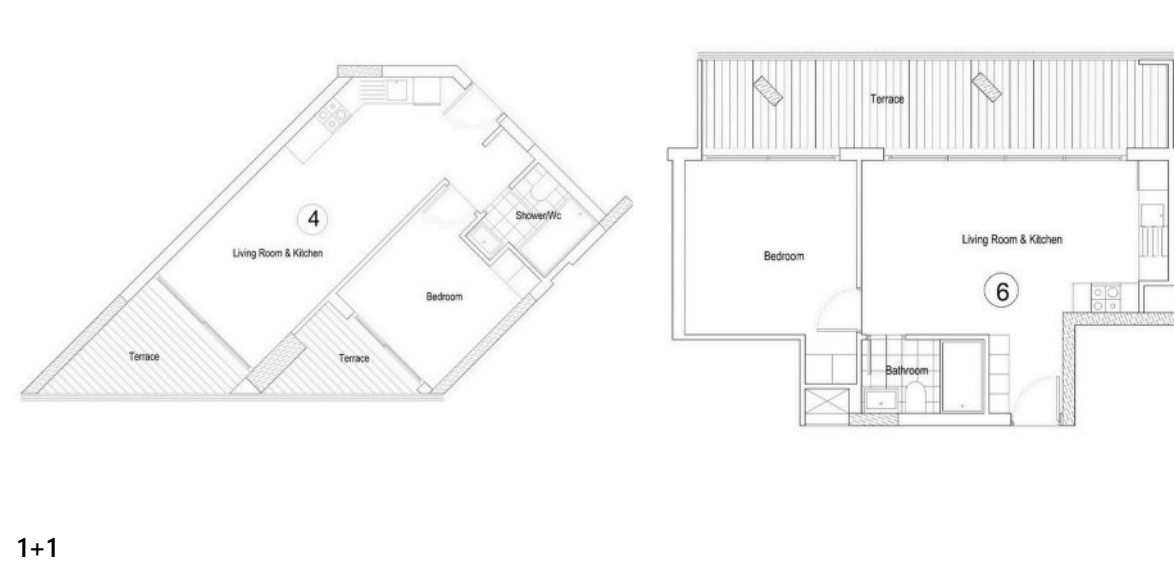
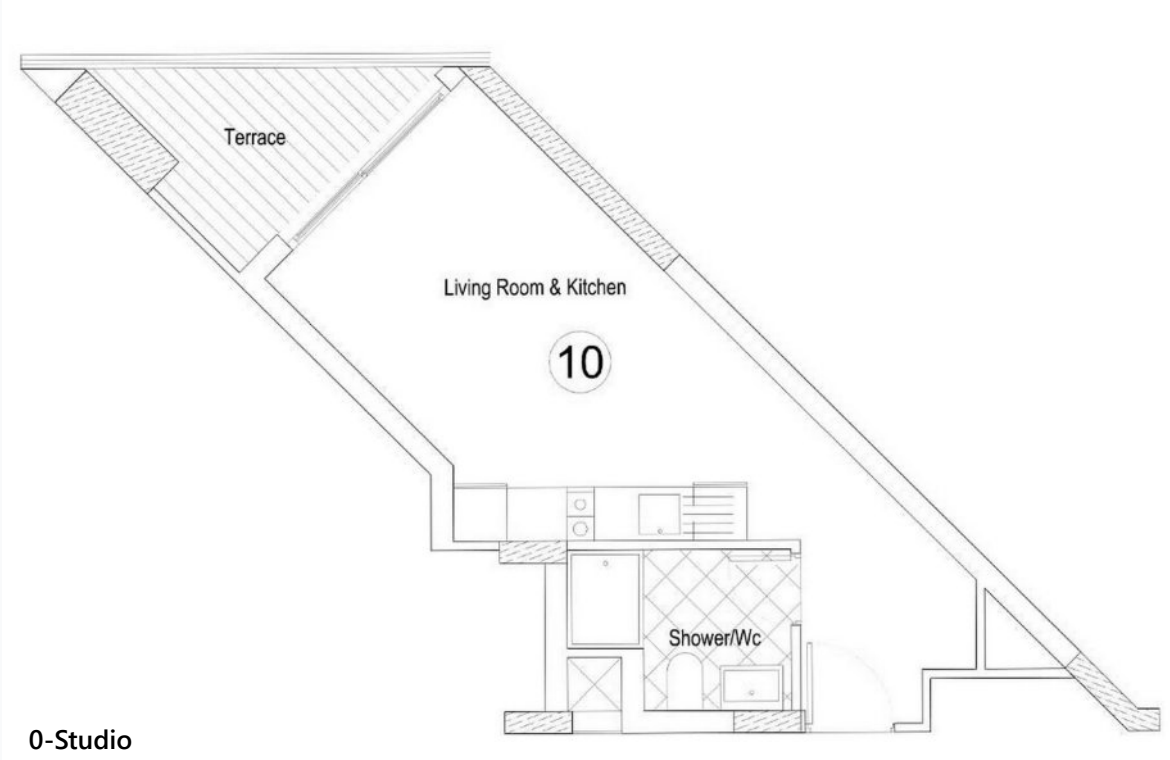
Median price per unit, K GBP



Structure of available units



Plans



Payment plans Deposit (non-refundable) 2000 GBP for a month

| Option | Down payment | Installments months | Discount | Offer |
|----------|--------------|---------------------|----------|-------|
| Option 1 | 35% | 36 | - | - |
| Option 2 | - | - | - | - |
| Option 3 | - | - | - | - |
| Option 4 | - | - | - | - |

Special offer

Fully furnished design package

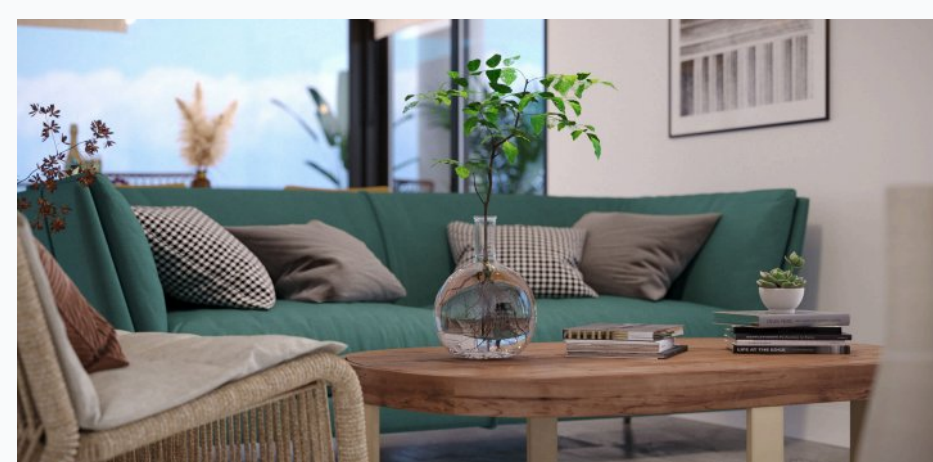
Rental guarantee

Trafo (Blank) GBP Resale after 70% Maintenance fee - Rental services 40% comission on...

Details

| Bedrooms | Subtype | Block | Unit № | Floor | View | Bathroom | Internal area, sq. m | Balcony/ Terrace, sq. m | Rooftop terrace, sq. m | Garden, sq. m | Gross covered area, sq. m | Current price, GBP | Price per sqm, GBP |
|----------|---------|-------|--------|-------|------|----------|----------------------|-------------------------|------------------------|---------------|---------------------------|--------------------|--------------------|
| 0-Studio | Flat | A | 510 | 05 | | | | 4 | | | 34 | 69 000 | 2 029 |
| 0-Studio | Flat | A | 1109 | 11 | | | | 7 | | | 36 | 75 500 | 2 097 |
| 0-Studio | Flat | A | 1209 | 12 | | | | 7 | | | 36 | 76 500 | 2 125 |
| 0-Studio | Flat | A | 1312 | 13 | | | | 5 | | | 37 | 84 500 | 2 284 |
| 0-Studio | Flat | B | 310 | 03 | | | | 4 | | | 34 | 75 860 | 2 231 |
| 0-Studio | Flat | B | 309 | 03 | | | | 7 | | | 36 | 76 510 | 2 125 |
| 0-Studio | Flat | B | 710 | 07 | | | | 4 | | | 34 | 82 100 | 2 415 |
| 0-Studio | Flat | B | 701 | 07 | | | | 5 | | | 37 | 78 800 | 2 130 |
| 0-Studio | Flat | B | 712 | 07 | | | | 5 | | | 37 | 78 800 | 2 130 |
| 0-Studio | Flat | B | 709 | 07 | | | | 7 | | | 36 | 82 750 | 2 299 |
| 0-Studio | Flat | B | 810 | 08 | | | | 4 | | | 34 | 83 660 | 2 461 |
| 0-Studio | Flat | B | 801 | 08 | | | | 5 | | | 37 | 80 360 | 2 172 |
| 0-Studio | Flat | B | 812 | 08 | | | | 5 | | | 37 | 80 360 | 2 172 |
| 0-Studio | Flat | B | 809 | 08 | | | | 7 | | | 36 | 84 310 | 2 342 |
| 0-Studio | Flat | B | 901 | 09 | | | | 5 | | | 37 | 81 920 | 2 214 |
| 0-Studio | Flat | B | 912 | 09 | | | | 5 | | | 37 | 81 920 | 2 214 |
| 0-Studio | Flat | B | 1010 | 10 | | | | 4 | | | 34 | 86 780 | 2 552 |
| 0-Studio | Flat | B | 1001 | 10 | | | | 5 | | | 37 | 83 480 | 2 256 |
| 0-Studio | Flat | B | 1012 | 10 | | | | 5 | | | 37 | 83 480 | 2 256 |
| 0-Studio | Flat | B | 1009 | 10 | | | | 7 | | | 36 | 87 430 | 2 429 |
| 0-Studio | Flat | B | 1110 | 11 | | | | 4 | | | 34 | 88 340 | 2 598 |
| 0-Studio | Flat | B | 1101 | 11 | | | | 5 | | | 37 | 85 040 | 2 298 |
| 0-Studio | Flat | B | 1112 | 11 | | | | 5 | | | 37 | 85 040 | 2 298 |
| 0-Studio | Flat | B | 1210 | 12 | | | | 4 | | | 34 | 89 900 | 2 644 |
| 0-Studio | Flat | B | 1201 | 12 | | | | 5 | | | 37 | 86 600 | 2 341 |
| 0-Studio | Flat | B | 1212 | 12 | | | | 5 | | | 37 | 86 600 | 2 341 |
| 0-Studio | Flat | B | 1209 | 12 | | | | 7 | | | 36 | 90 550 | 2 515 |
| 0-Studio | Flat | B | 1310 | 13 | | | | 4 | | | 34 | 91 460 | 2 690 |

Interior specification



Interior specification

- Air Conditioner
- Ceramic flooring
- Double glazed windows
- Laminate flooring in the bedrooms
- Ventilation in bathrooms

Exterior specification



Exterior specification

- Glass fence balcony
- Terracing with inbuilt lighting & power sockets

Location of complex

